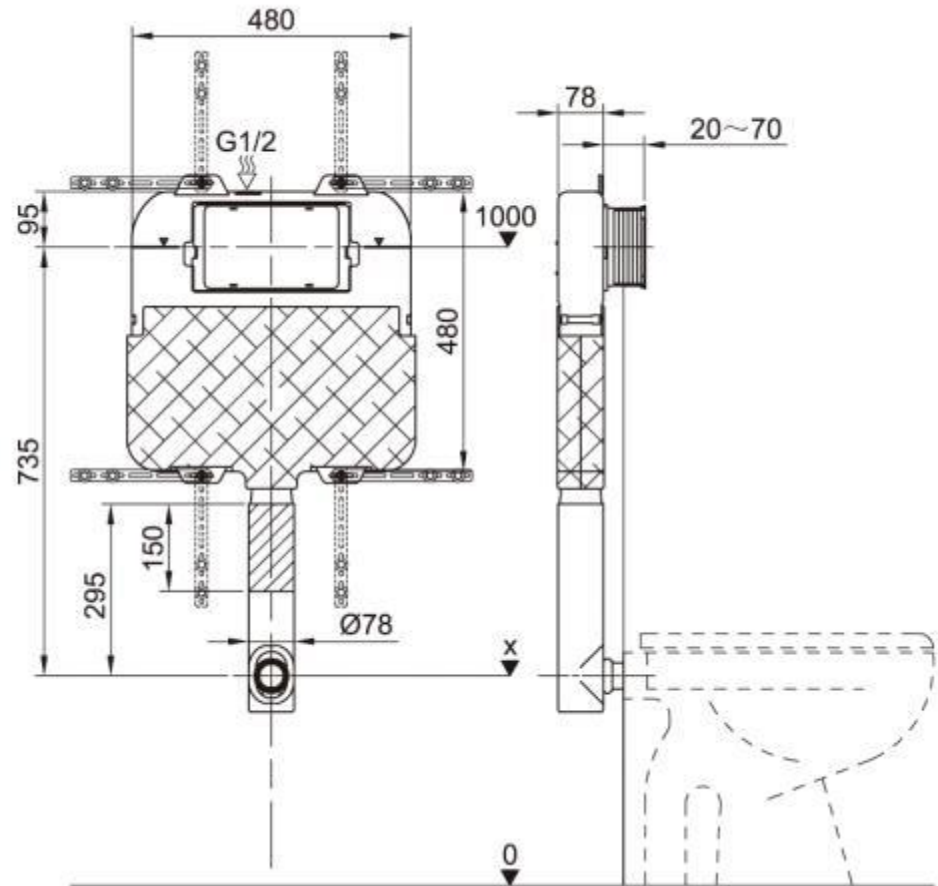


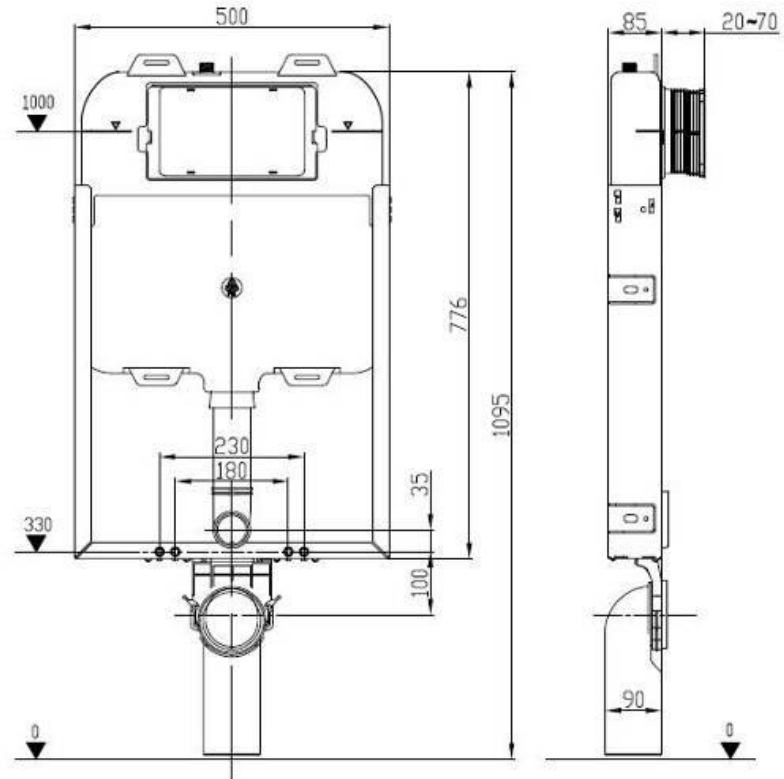
Introduction of WDI K301 concealed cistern

1. Structure

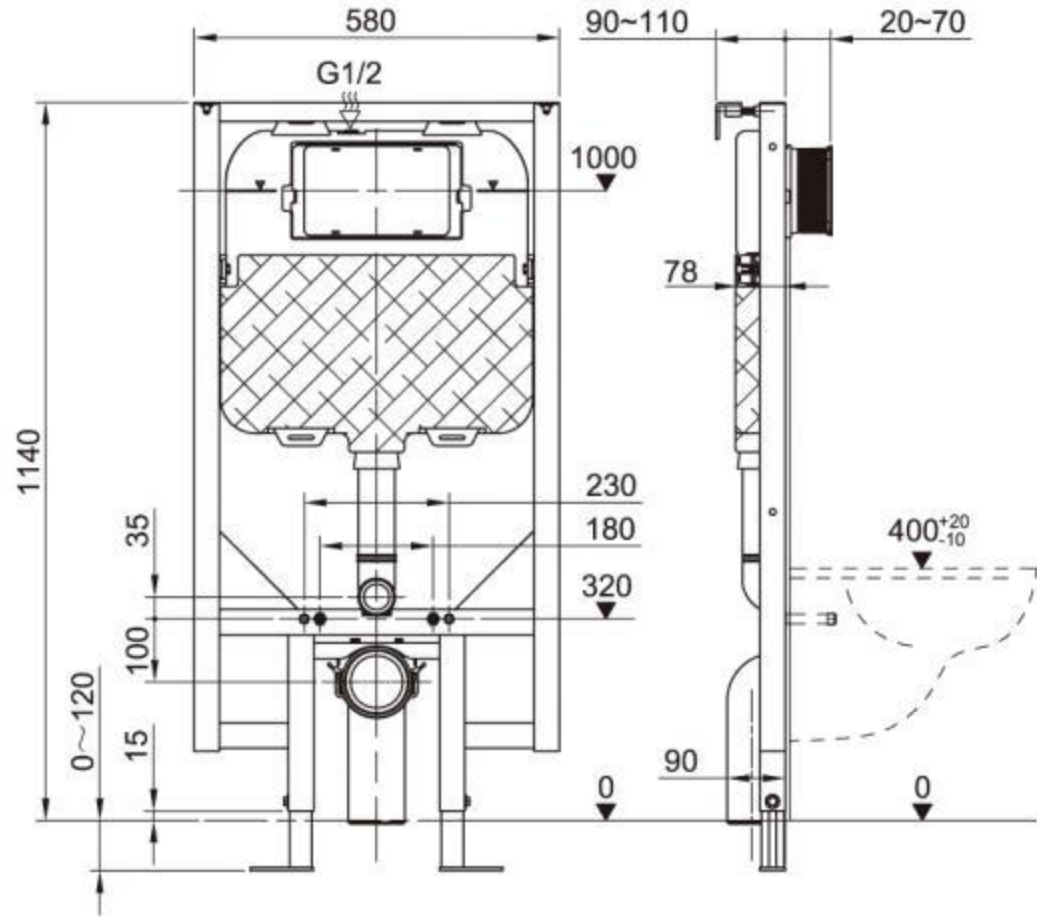
1) Cistern only K301-D



2) With simple bracket K301-B(wall-hung toilet, wet wall only)



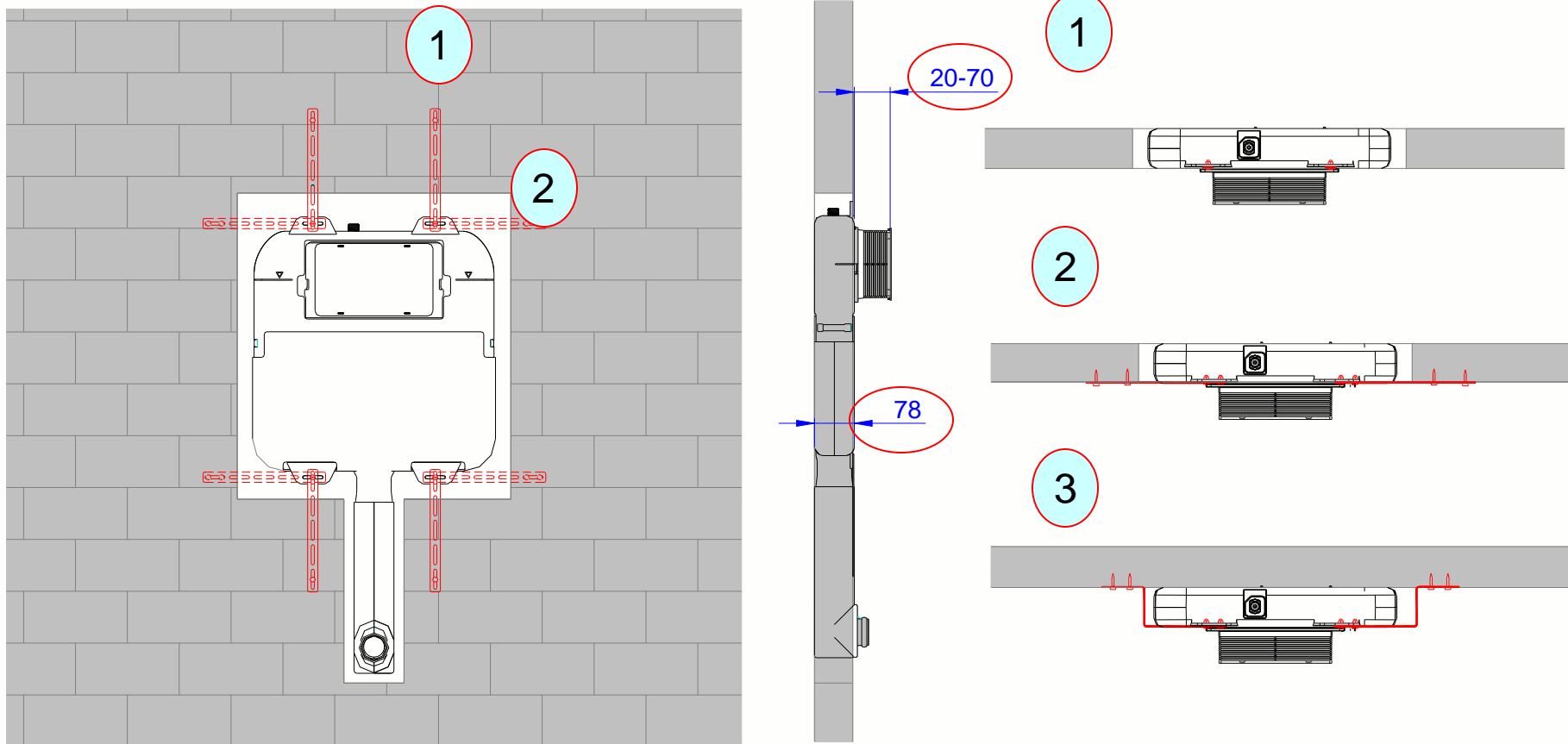
3) With metal frame K301-A



2. Advantages

- 1、 Thin cistern design (78mm in total), multiform installation
- 2、 Quiet & good performance inlet valve
- 3、 Quick installation
- 4、 Adjustable flush volume (By fine tuning)
- 5、 Refill function (It is not only applicable to wash down toilet but also the siphon toilet)
- 6、 Adjustable flush pipe
- 7、 Smaller operation force
- 8、 More options

1. Thin tank design, multiform installation



The maximum width of tank is 78mm which will reduce the wall thickness.
Three kinds of installation method as the illustration above.

2. Silent inlet valve

Advantages:

1. Silent filling: 17 dbf
2. Dirty water resistant- with self cleaning function
3. Excellent performance under low water pressure (0.1kg-20kgs)
4. One valve fit for all, UPC, WRAS, WATERMARK, GB, NF, LGA, SASO, etc.

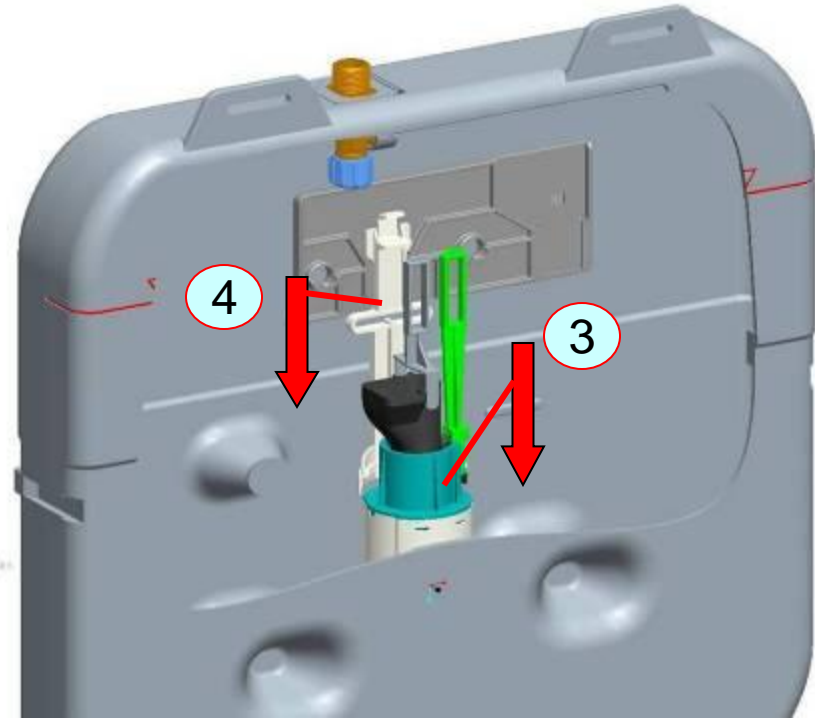


3. Quick installation

(1) Quick flush valve assembly



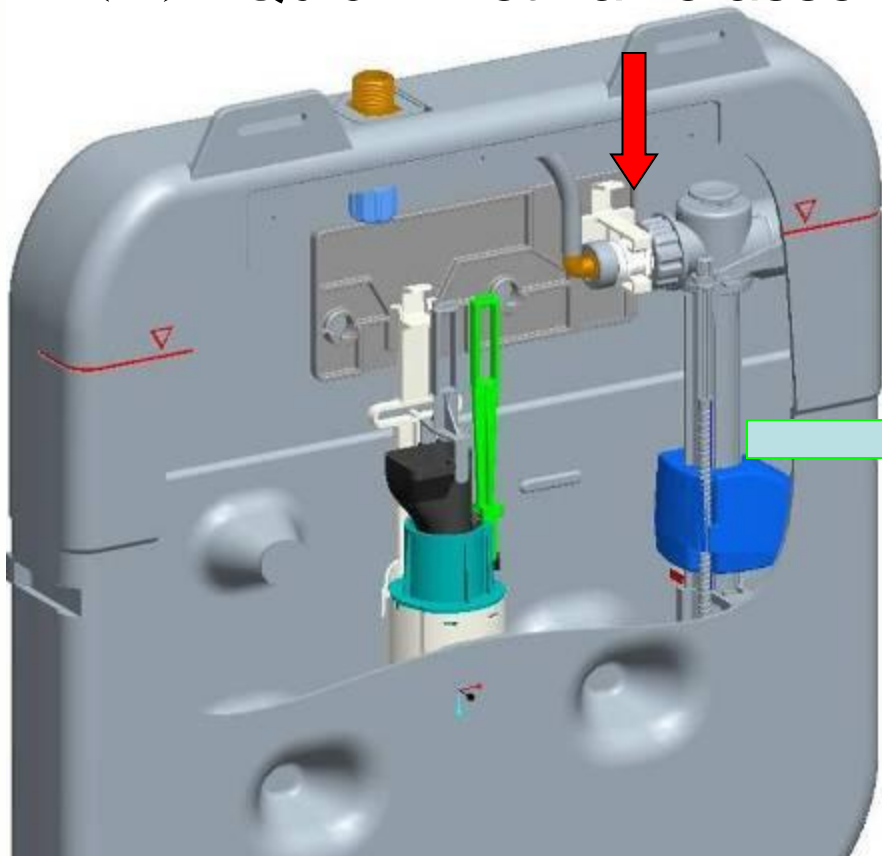
1. Fold down the rod
2. The top half of the flush valve can be turned 360° for assembly



3. Push the base of flush valve down into the outlet of the cistern.
4. Put the locking piece on the flush valve and press the locking piece down following the guider on the cistern. When you hear the sound of “click”, the flush is fixed.

3. Quick installation

(2) Quick Inlet valve assembly



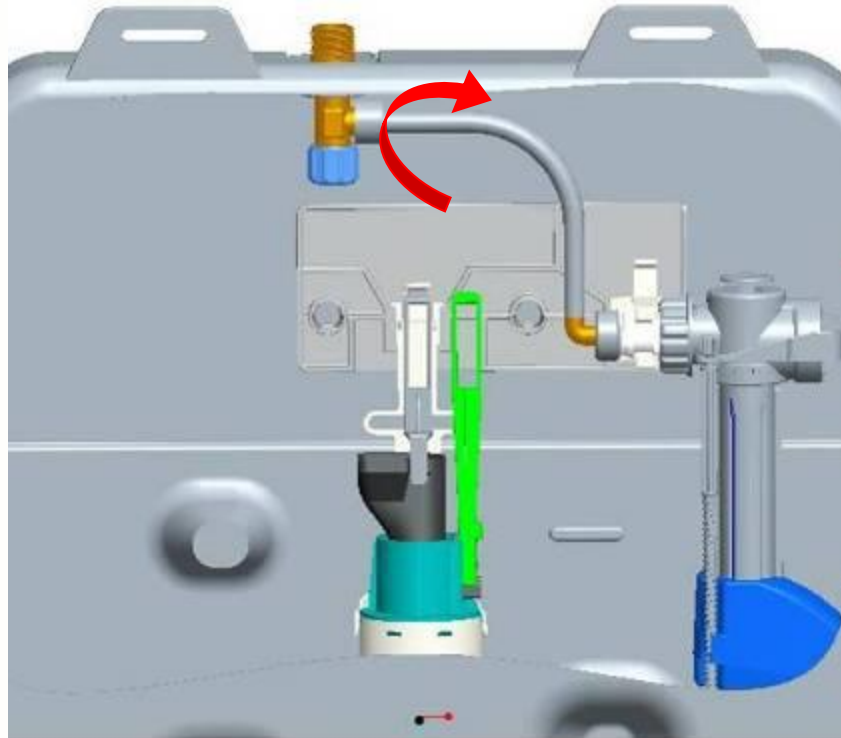
B3210 inlet vavle



Push the bracket of the inlet valve down following the guider. When you hear a sound of “click”, the inlet valve is fixed.

3. Quick installation

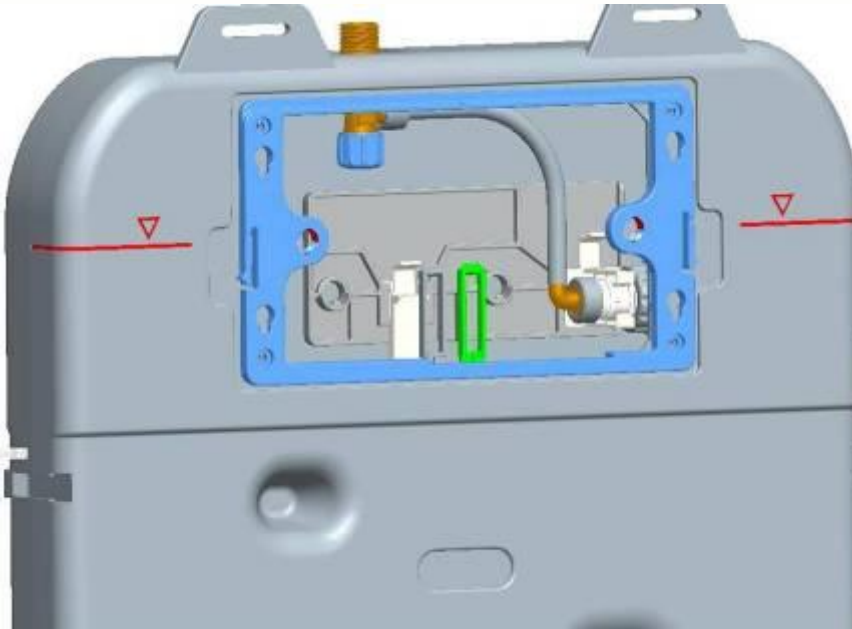
(3) Quick flexible tube connection



Connecting the flexible tube just by hand.
No need to use any tools

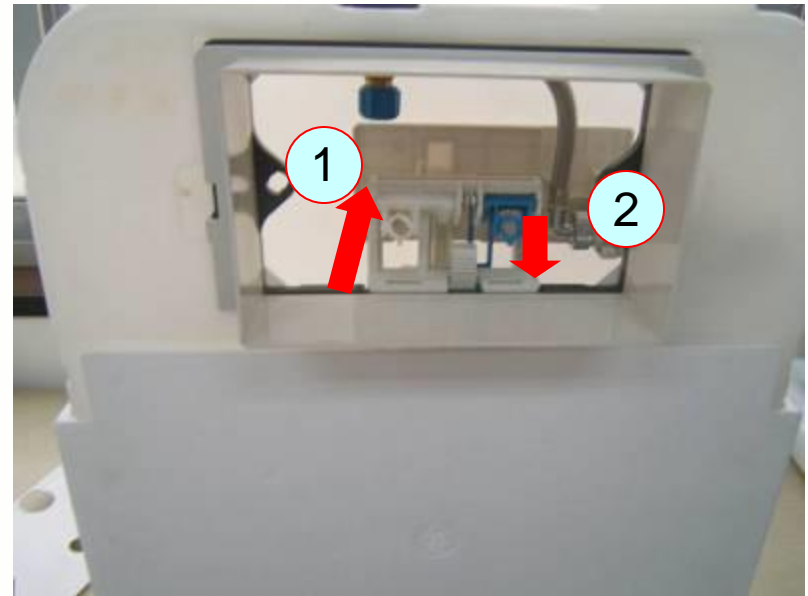
3. Quick installation

(4) Easy disassembly and reassembly



The inlet valve and flush valve can be disassembled and reassembled individually. Noninterference.

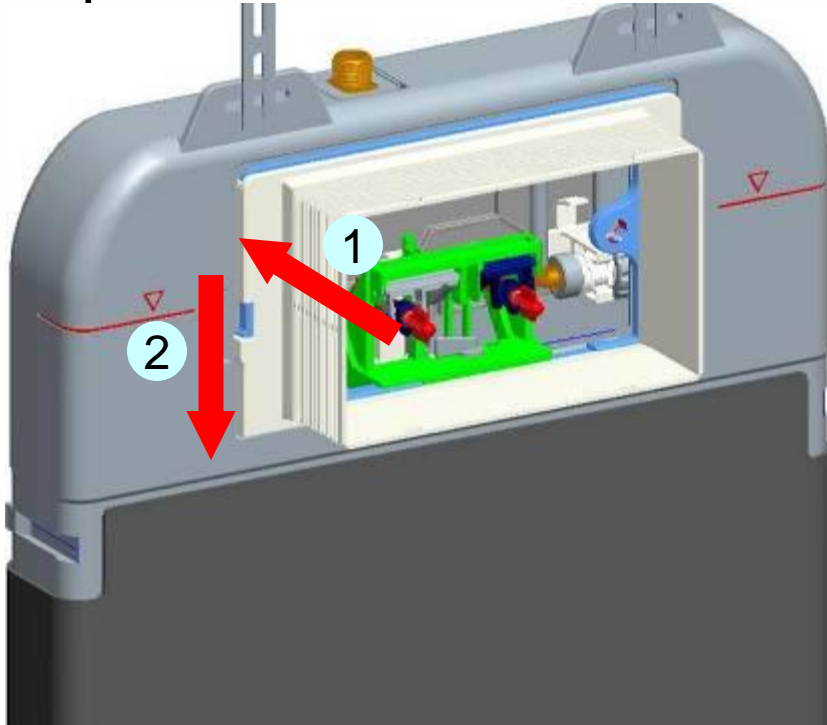
(5) Quick bracket assembly



Easy bracket assembly and reliable fixation.

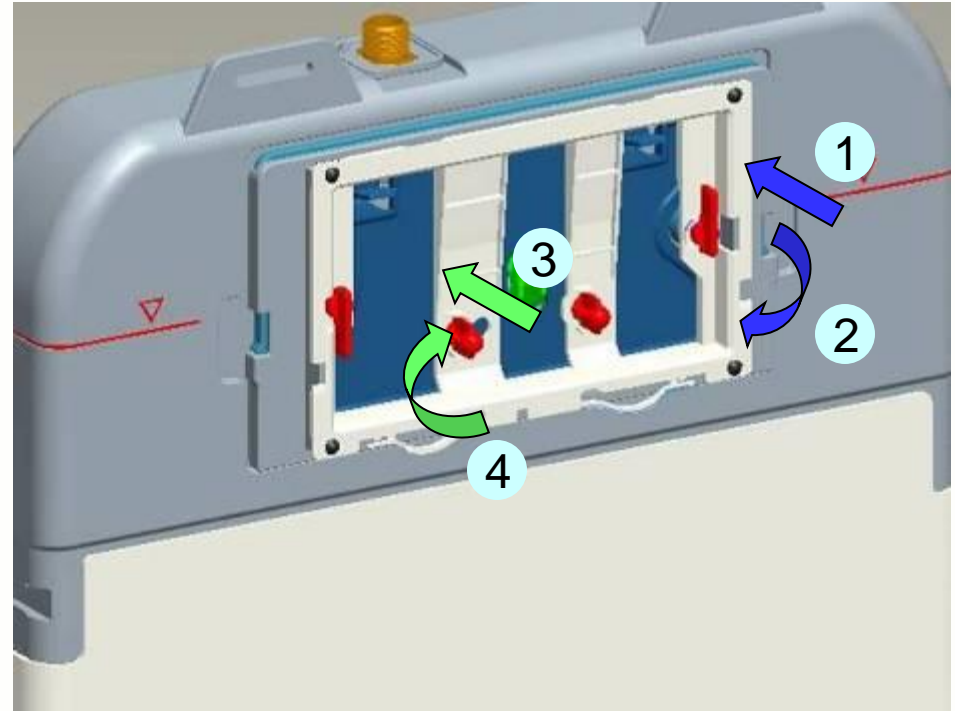
3. Quick installation

(6) Quick installation of protect frame



Put the protect frame onto the base, and then push it down. When you hear “click”, the protect frame is fixed.

(7) Quick installation of push panel



Put the panel bracket on window of cistern. Insert the fixing rods and push rods and then turn the rods. When you hear “click”, the panel bracket is fixed.

4. Adjustable flush volume

Flush volume can be 6/3L, 4.5/3L, 4.8/3.2L, 4/2.5L and etc.

Fine tuning is available for different toilet to obtain the same flush volume (see next page).

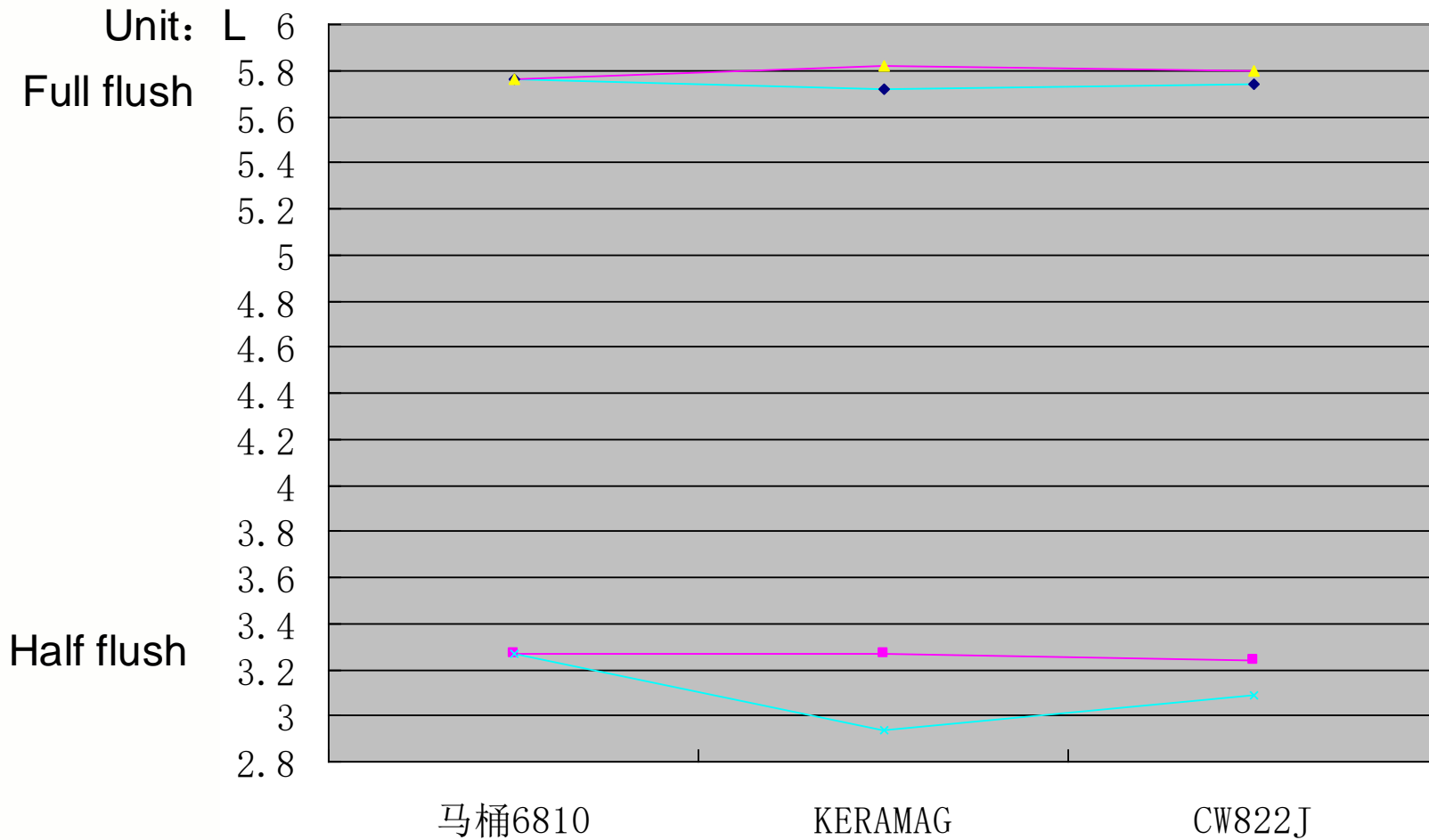
Half flush adjustment

Full flush adjustment



Moving the red piece up to reduce the flush volume. To move the red piece down, the flush volume will increase.

Fine tuning of flush volume



Note:

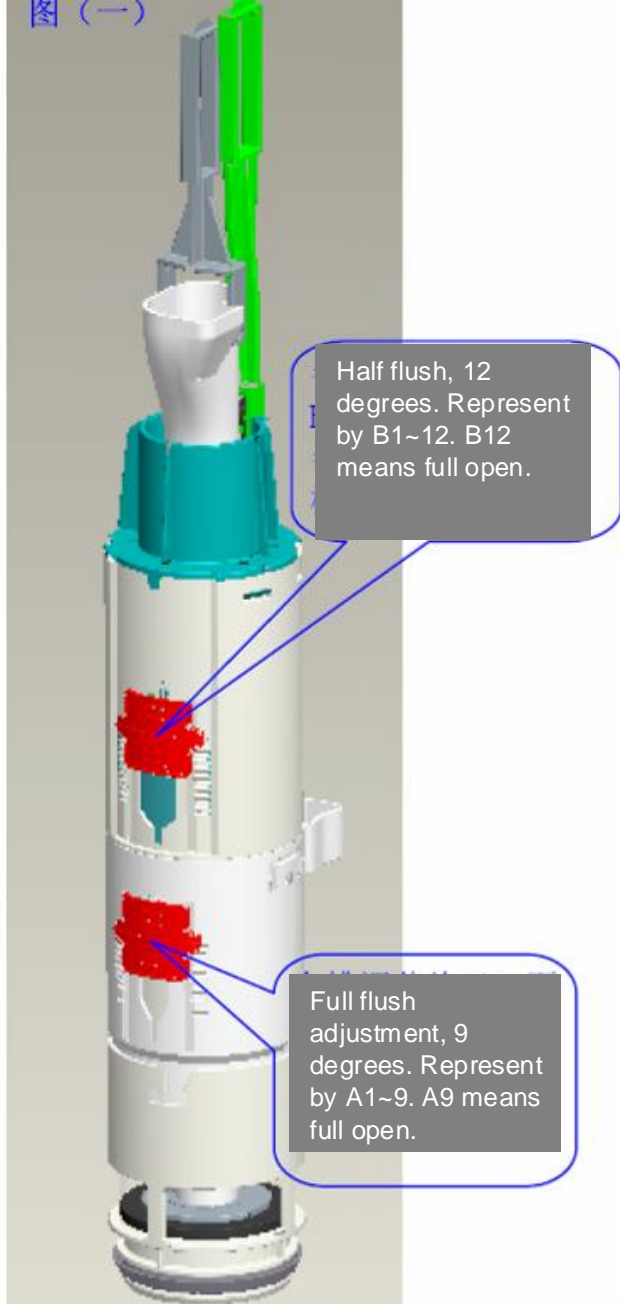
1. Blue line, it indicates the flush volume in different toilet with the same flush setting.
It means that the toilet is also a key factor which affects the flush volume.
2. Red line, it means that we can make the same flush volume in different toilet by fine adjustment.

4. Adjustable flush volume

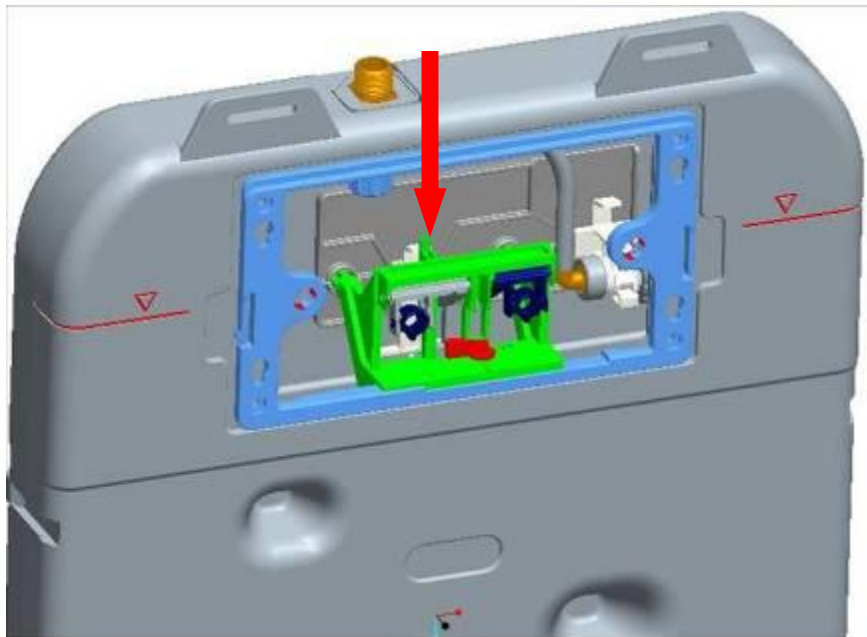


| Flush volume (L) | Position of the red piece | Working water level (MM) | Inlet valve set up "A" (MM) |
|------------------|---------------------------|--------------------------|-----------------------------|
| 4.8/3.2 | A9 & B4 | 225 | 26 |
| 4.5/3.0 | A9 & B4 | 210 | 15 |

| Flush volume (L) | Position of the red piece | Working water level (MM) | Inlet valve setup "A" (MM) |
|------------------|---------------------------|--------------------------|----------------------------|
| 6.0/3.0 | A3 & B12 | 240 | 45 |
| 4.0/2.5 | A7 & B12 | 205 | 10 |



5. Refill adapter



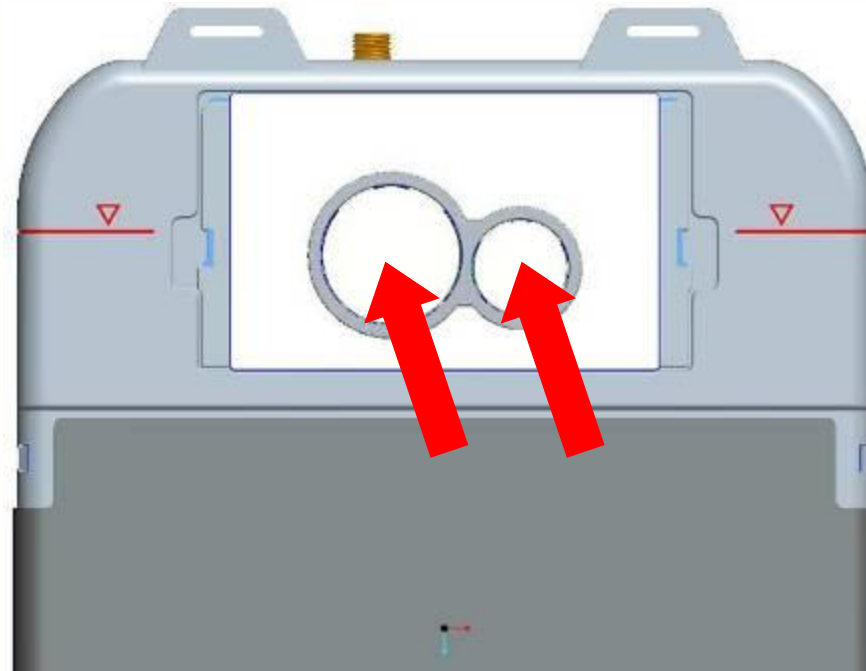
K301 provides the refill adapter. The refill function is available which fulfills the requirement of siphon-toilet.

6. Adjustable flush pipe



Fit for floor standing toilet. The flush pipe can move up and down to meet the toilet after finishing the wall. Adjustment range is 0~25mm.

7. Smaller operation force



The maximum operation force is just 1.6Kgf

Performance

| No | Item | Requirement |
|----|-------------------------------|--|
| 1 | Standard | JC987-2005、PrEN 14055: 2007、EN997 |
| 2 | Dimension | ①Frame size 1140*580; wall fixing adjustment 90-110mm ②Cistern size 480*480*78mm (including foam crust) |
| 3 | Flush volume | 6/3L, 4.5/3L, 4.8/3.2L and 4/2.5L. Fine adjustment in 0.5L |
| 4 | Flush rate | ≥2.0L/S |
| 5 | Operation force | ≤1.6 Kgf |
| 6 | Strength of metal frame | Withstand loading of 400kgf |
| 7 | Drop test | No damage observed |
| 8 | Leak tightness | Comply with China and EU standard |
| 9 | Life time | Each 100,000 cycles for full flush and half flush |
| 10 | Low and high temperature test | Environment $70 \pm 1^{\circ}\text{C}$ 、 $-25 \pm 1^{\circ}\text{C}$, No distortion, damage and leaking observed. |

8. More options

- Pneumatic system
 - ◆ Free push plate position:
4M away installation;
 - ◆ Free bathroom design;
 - ◆ Light performance force;
 - ◆ Avoid violent usage;

Flexible distance follow one's inclinations
 柔性距离 随心所欲

通过内置气压系统控制，实现方便的安装方式，稳定的产品性能与不受限制的安裝位置，带给卫浴间带来一种随心所欲的卫浴体验。其柔性距离随使用者随意距离，而能适时的引入核心与驱动力的优势，其柔性距离随使用者随意距离，而能适时的引入核心与驱动力的优势，其柔性距离随使用者随意距离，而能适时的引入核心与驱动力的优势。



产品特点及优势

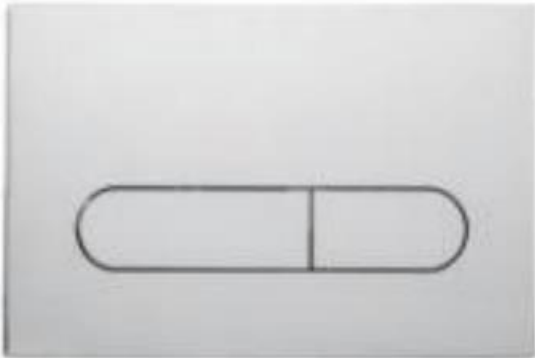
便捷安装

- 驱动原理可能任意高度安装位置，与冲水最大移动距离4米。
- 水箱安装在任何地方，轻松的安装、使用。
- 产品维护、维护简单快捷。

卓越品质

- 冲水装置于高位，有效提高马桶冲水能力，达到节水目的。
- 配备WDI独有的优质冲水件产品，10年质保，使用更安心。
- 符合：JC703-2005水箱配件测试标准，及其它国家水箱配件测试标准。

Available push panel



New High-end Push Plates

White glass



Black glass

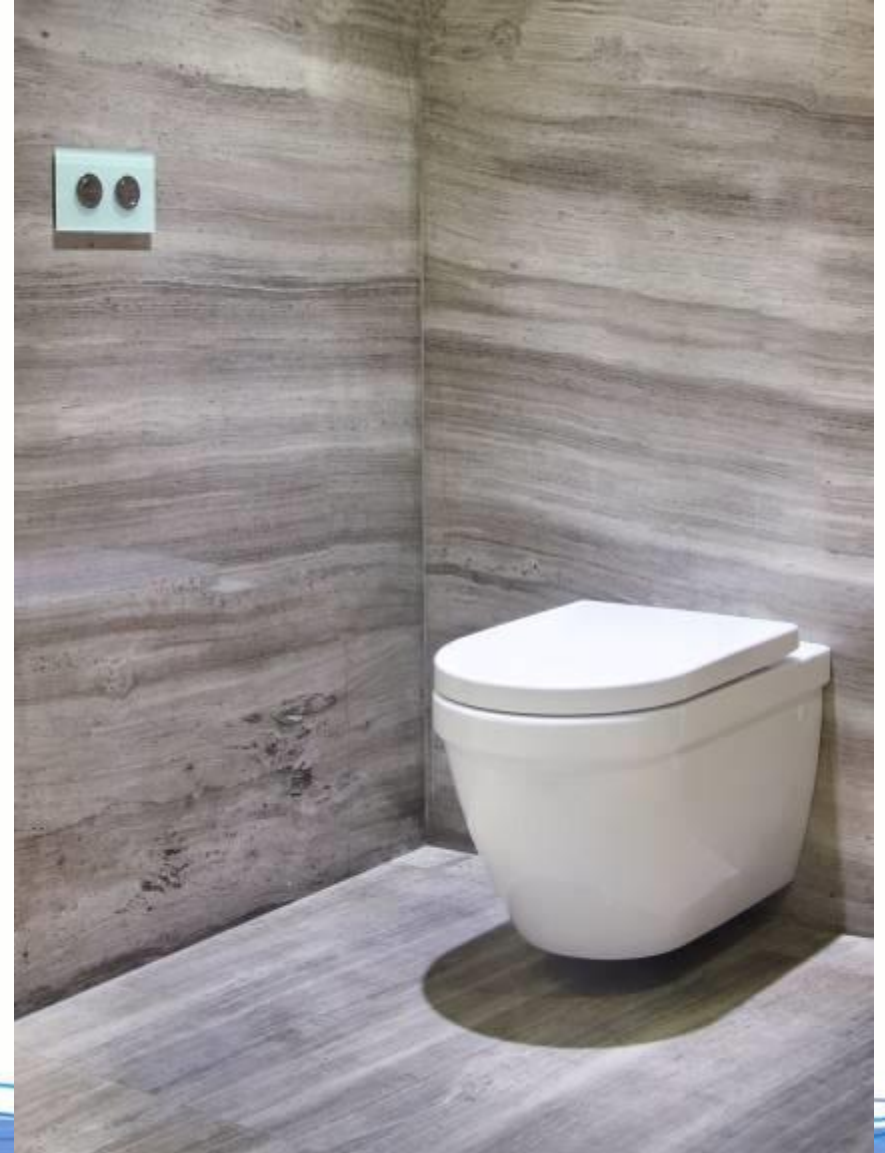


Shining stainless steel



Matt stainless steel

Examples of Bathrooms



Examples of Bathrooms

